

Sanitary Butt weld Fittings

Materials

- Only AISI T316L Stainless Steel is used for fitting manufacturing.

Surface Finishes

- Multiple combinations of finishes are available, from 10Ra maximum to 30Ra minimum.

Marking

- All fittings are pin-printed for permanent identification per ASME-BPE.
- The mill heat number is stamped on each fitting for each component.

Traceability

- A printed copy of MTR's is provided for all components used in fitting manufacturing and is available upon request.

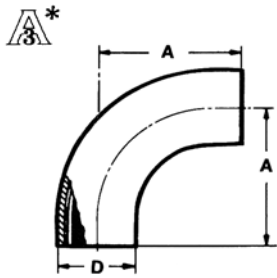
Packaging

- Each fitting is cleaned in Deionized Water and dried with filtered air.
- All ends (weld & clamp) are capped to prevent damage.
- Each fitting is individually placed in a plastic bag and heat sealed.
- Every fitting has a label attached to the outside of the bag which lists the part number, part description and size, material type, heat number(s) and date of manufacture.

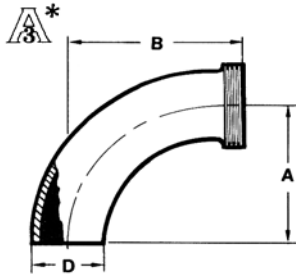
[Elbows](#)
[Crosses](#)
[Tees](#)
[Reducers](#)

[Page 2 & 3](#)
[Page 3](#)
[Page 4 & 5](#)
[Page 6 & 7](#)

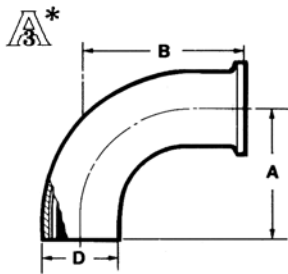
Sanitary Butt Weld Elbows



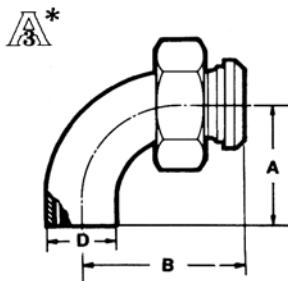
A2S		90° ELL		
Size Tube O.D.	A	D	Nom. Wall	
1	2 1/16	1	.065	
1 1/2	2 15/16	1 1/2	.065	
2	4 1/16	2	.065	
2 1/2	5 3/16	2 1/2	.065	
3	6 5/16	3	.065	
4	8 5/16	4	.083	



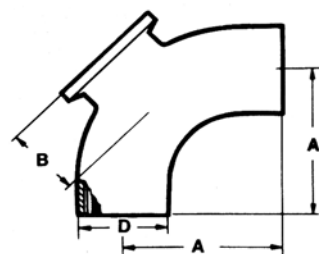
A2C		90° ELL		
Size Tube O.D.	A	B	D	Nom. Wall
1 1/2	2 15/16	3 21/32	1 1/2	.065
2	4 1/16	4 25/32	2	.065
2 1/2	5 3/16	6 1/32	2 1/2	.065
3	6 5/16	7 7/32	3	.065
4	8 5/16	9 17/32	4	.083




A2CM		90° ELL		
Size Tube O.D.	A	B	D	Nom. Wall
1 1/2	2 15/16	3 7/16	1 1/2	.065
2	4 1/16	4 9/16	2	.065
2 1/2	5 3/16	5 11/16	2 1/2	.065
3	6 5/16	6 13/16	3	.065
4	8 5/16	8 15/16	4	.083



A2F		90° ELL		
Size Tube O.D.	A	B	D	Nom. Wall
1 1/2	2 15/16	3 21/32	1 1/2	.065
2	4 1/16	4 25/32	2	.065
2 1/2	5 3/16	6 1/32	2 1/2	.065
3	6 5/16	7 7/32	3	.065
4	8 5/16	9 17/32	4	.083

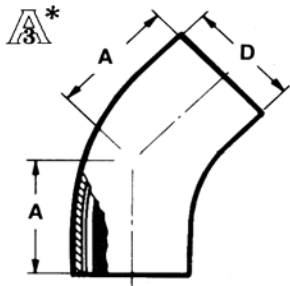


A2CP7		90° Inspection ELL		
Size Tube O.D.	A	B	D	Nom. Wall
1 1/2	2 15/16	1 3/8	1 1/2	.065
2	4 1/16	1 5/8	2	.065
2 1/2	5 3/16	1 7/8	2 1/2	.065
3	6 5/16	2 1/8	3	.065
4	8 5/16	2 3/4	4	.083

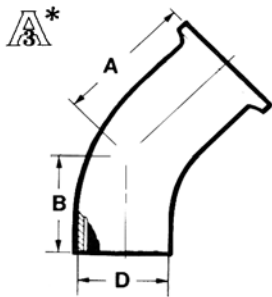
* Polished I.D. and O.D. only

sani-tech
west

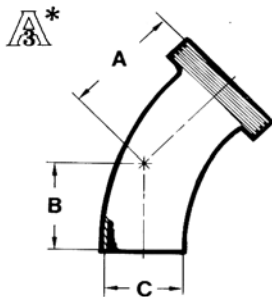
Sanitary Butt Weld Elbows & Crosses



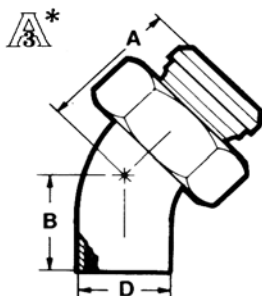
A2KS		45° ELL	
Size Tube O.D.	A	D	Nom. Wall
1	1 3/16	1	.065
1 1/2	1 5/8	1 1/2	.065
2	2 5/16	2	.065
2 1/2	3	2 1/2	.065
3	3 11/16	3	.065
4	4 13/16	4	.083



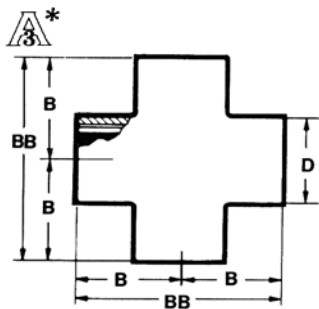
A2KM		45° ELL		
Size Tube O.D.	A	B	D	Nom. Wall
1 1/2	2 1/8	1 5/8	1 1/2	.065
2	2 13/16	2 5/16	2	.065
2 1/2	3 1/2	3	2 1/2	.065
3	4 3/16	3 11/16	3	.065
4	5 7/16	4 13/16	4	.083




A2K		45° ELL		
Size Tube O.D.	A	B	D	Nom. Wall
1 1/2	2 11/32	1 5/8	1 1/2	.065
2	3 1/32	2 5/16	2	.065
2 1/2	3 27/32	3	2 1/2	.065
3	4 19/32	3 11/16	3	.065
4	6 1/32	4 13/16	4	.083



A2P		45° ELL		
Size Tube O.D.	A	B	D	Nom. Wall
1 1/2	2 11/32	1 5/8	1 1/2	.065
2	3 1/32	2 5/16	2	.065
2 1/2	3 27/32	3	2 1/2	.065
3	4 19/32	3 11/16	3	.065
4	6 1/32	4 13/16	4	.083

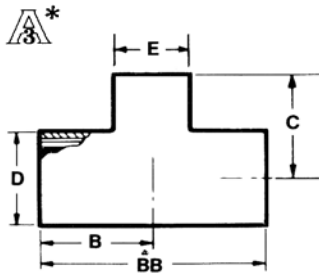


A9WWWW		CROSS		
Size Tube O.D.	B	BB	D	Nom. Wall
1	1 1/8	2 1/4	1	.065
1 1/2	1 21/32	3 5/16	1 1/2	.065
2	2 1/6	4 1/8	2	.065
2 1/2	2 11/32	4 11/16	2 1/2	.065
3	2 19/32	5 3/16	3	.065
4	3 7/16	6 7/8	4	.083

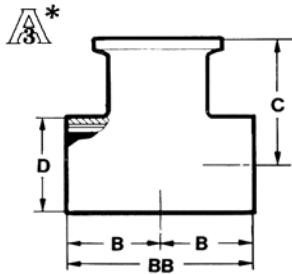
 Polished I.D. and O.D. only

sani-tech
west

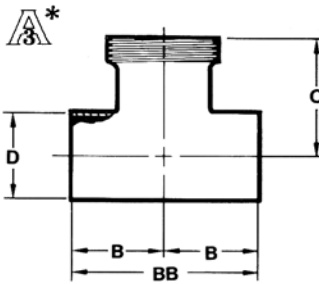
Sanitary Butt Weld Tees



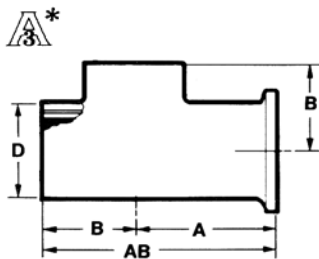
A7RWWW						REDUCING TEE
Size Tube O.D.	B	BB	C	D	E	Nom. Wall
1 1/2 x 1	1 21/32	3 5/16	1 3/8	1 1/2	1	.065
2 x 1 1/2	2 1/16	4 1/8	1 29/32	2	1 1/2	.065
2 1/2 x 2	2 11/32	4 11/16	2 5/16	2 1/2	2	.065
3 x 2	2 19/32	5 3/16	2 9/16	3	2	.065
3 x 2 1/2	2 19/32	5 3/16	3 1/4	3	2 1/2	.065



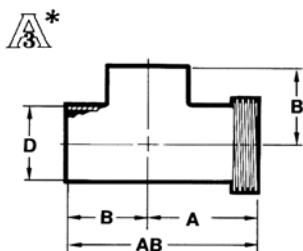
A7WWM					TEE
Size Tube O.D.	B	BB	C	D	Nom. Wall
1 1/2	1 21/32	3 5/16	2 5/32	1 1/2	.065
2	2 1/16	4 1/8	2 9/16	2	.065
2 1/2	2 11/32	4 11/16	2 27/32	2 1/2	.065
3	2 19/32	5 3/16	3 3/32	3	.065
4	3 7/16	6 7/8	4 1/16	4	.083



A7WWT					TEE
Size Tube O.D.	B	BB	C	D	Nom. Wall
1 1/2	1 21/32	3 5/16	2 3/8	1 1/2	.065
2	2 1/16	4 1/8	2 25/32	2	.065
2 1/2	2 11/32	4 11/16	3 3/16	2 1/2	.065
3	2 19/32	5 3/16	3 1/2	3	.065
4	3 7/16	6 7/8	4 21/32	4	.083



A7WMV					TEE
Size Tube O.D.	A	B	AB	D	Nom. Wall
1 1/2	2 5/32	1 21/32	3 13/16	1 1/2	.065
2	2 9/16	2 1/6	4 5/8	2	.065
2 1/2	2 27/32	2 11/32	5 3/16	2 1/2	.065
3	3 3/32	2 19/32	5 11/16	3	.065
4	4 1/16	3 7/16	7 1/2	4	.083

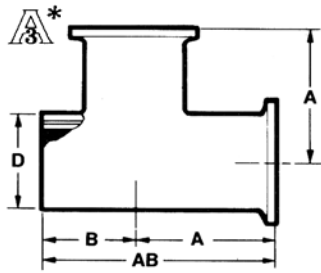


A7WMV					TEE
Size Tube O.D.	A	B	AB	D	Nom. Wall
1 1/2	2 3/8	1 21/32	4 1/32	1 1/2	.065
2	2 25/32	2 1/6	4 27/32	2	.065
2 1/2	3 3/16	2 11/32	5 17/32	2 1/2	.065
3	3 1/2	2 19/32	6 3/32	3	.065
4	4 21/32	3 7/16	8 3/32	4	.083

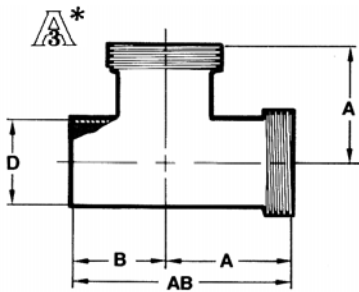
Polished I.D. and O.D. only

sani-tech
west

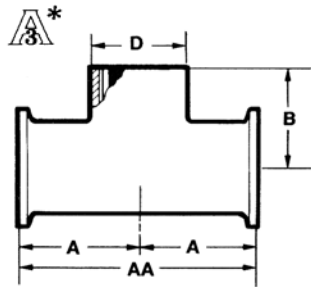
Sanitary Butt Weld Tees



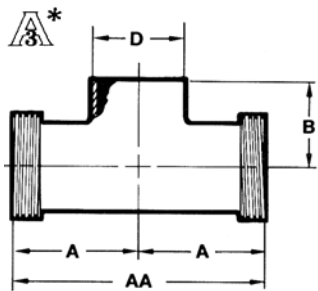
A7WMM					TEE
Size Tube O.D.	A	B	AB	D	Nom. Wall
1 1/2	2 5/32	1 21/32	3 13/16	1 1/2	.065
2	2 9/16	2 1/6	4 5/8	2	.065
2 1/2	2 27/32	2 11/32	5 3/16	2 1/2	.065
3	3 3/32	2 19/32	5 11/16	3	.065
4	4 1/16	3 7/16	7 1/2	4	.083



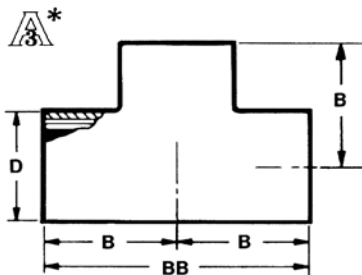
A7WTT					TEE
Size Tube O.D.	A	B	AB	D	Nom. Wall
1 1/2	2 3/8	1 21/32	4 1/32	1 1/2	.065
2	2 25/32	2 1/6	4 27/32	2	.065
2 1/2	3 3/16	2 11/32	5 17/32	2 1/2	.065
3	3 1/2	2 19/32	6 3/32	3	.065
4	4 21/32	3 7/16	8 3/32	4	.083




A7MMW					TEE
Size Tube O.D.	A	AA	B	D	Nom. Wall
1 1/2	2 5/32	4 5/16	1 21/32	1 1/2	.065
2	2 9/16	5 1/8	2 1/16	2	.065
2 1/2	2 27/32	5 11/16	2 11/32	2 1/2	.065
3	3 3/32	6 3/16	2 19/32	3	.065
4	4 1/16	8 1/8	3 7/16	4	.083



A7TTW					TEE
Size Tube O.D.	A	AA	B	D	Nom. Wall
1 1/2	2 3/8	4 3/4	1 21/32	1 1/2	.065
2	2 25/32	5 9/16	2 1/16	2	.065
2 1/2	3 3/16	6 3/8	2 11/32	2 1/2	.065
3	3 1/2	7	2 19/32	3	.065
4	4 21/32	9 5/16	3 7/16	4	.083

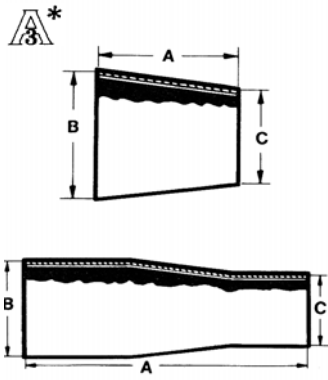


A7WWW				TEE
Size Tube O.D.	B	BB	D	Nom. Wall
1	1 1/8	2 1/4	1	.065
1 1/2	1 21/32	3 5/16	1 1/2	.065
2	2 1/6	4 1/8	2	.065
2 1/2	2 11/32	4 11/16	2 1/2	.065
3	2 19/32	5 3/16	3	.065
4	3 7/16	6 7/8	4	.083

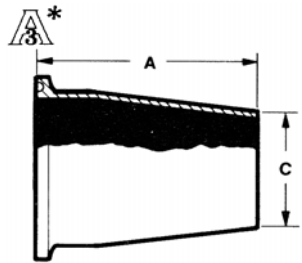
* Polished I.D. and O.D. only

sani-tech
west

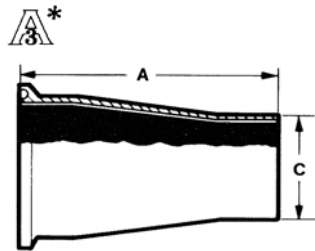
Sanitary Butt Weld Reducers



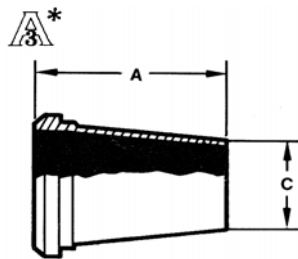
A31/A31E		Concentric Reducer/ Concentric Reducer (With Extension)			
Size Tube O.D.	A (A32)	A (A32E)	B	C	Nom. Wall
1 1/2 x 1	2	5	1 1/2	1	.065
2 x 1 1/2	2	5 1/2	2	1 1/2	.065
2 1/2 x 1 1/2	4	7 1/2	2 1/2	1 1/2	.065
2 1/2 x 2	2	6	2 1/2	2	.065
3 x 2	4	8	3	2	.065
3 x 2 1/2	2	6	3	2 1/2	.065
4 x 2	8	12 1/2	4	2	.083
4 x 2 1/2	6	10 1/2	4	2 1/2	.083
4 x 3	4	8 1/2	4	3	.083



A31M		Concentric Reducer		
Size Tube O.D.	A	C	Nom. Wall	
2 x 1 1/2	2 1/2	1 1/2	.065	
2 1/2 x 1 1/2	4 1/2	1 1/2	.065	
2 1/2 x 2	2 1/2	2	.065	
3 x 2	4 1/2	2	.065	
3 x 2 1/2	2 1/2	2 1/2	.065	
4 x 2	8 5/8	2	.083	
4 x 2 1/2	6 5/8	2 1/2	.083	
4 x 3	4 5/8	3	.083	



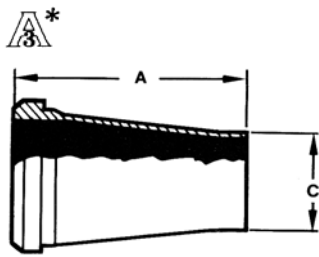
A31ME		Concentric Reducer		
Size Tube O.D.	A	C	Nom. Wall	
2 x 1 1/2	3 5/16	1 1/2	.065	
2 1/2 x 1 1/2	3 5/16	1 1/2	.065	
2 1/2 x 2	3 9/16	2	.065	
3 x 2	5 9/16	2	.065	
3 x 2 1/2	3 11/16	2 1/2	.065	
4 x 2	9 11/16	2	.083	
4 x 2 1/2	7 13/16	2 1/2	.083	
4 x 3	5 15/16	3	.083	



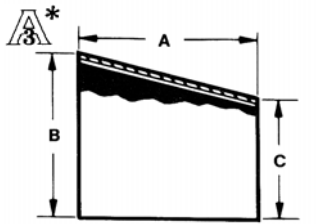
A31P		Concentric Reducer		
Size Tube O.D.	A	C	Nom. Wall	
2 x 1 1/2	2 23/32	1 1/2	.065	
2 1/2 x 1 1/2	4 27/32	1 1/2	.065	
2 1/2 x 2	2 27/32	2	.065	
3 x 2	4 29/32	2	.065	
3 x 2 1/2	2 29/32	2 1/2	.065	
4 x 2	9 7/32	2	.083	
4 x 2 1/2	7 7/32	2 1/2	.083	
4 x 3	5 7/32	3	.083	

Polished I.D. and O.D. only

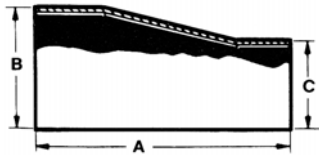
Sanitary Butt Weld Reducers



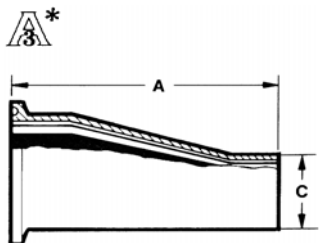
A31PE		Concentric Reducer (With Extension)		
Size Tube O.D.	A	C	Nom. Wall	
2 x 1 1/2	3 17/32	1 1/2	.065	
2 1/2 x 1 1/2	5 21/32	1 1/2	.065	
2 1/2 x 2	3 29/32	2	.065	
3 x 2	5 31/32	2	.065	
3 x 2 1/2	4 3/32	2 1/2	.065	
4 x 2	10 9/32	2	.083	
4 x 2 1/2	8 13/32	2 1/2	.083	
4 x 3	6 17/32	3	.083	




A32/A32E		Eccentric Reducer/ Eccentric Reducer (With Extension)			
Size Tube O.D.	A (A32)	A (A32E)	B	C	Nom. Wall
1 1/2 x 1	2	5	1 1/2	1	.065
2 x 1 1/2	2	5 1/2	2	1 1/2	.065
2 1/2 x 1 1/2	4	7 1/2	2 1/2	1 1/2	.065
2 1/2 x 2	2	6	2 1/2	2	.065
3 x 2	4	8	3	2	.065
3 x 2 1/2	2	6	3	2 1/2	.065
4 x 2	8	12 1/2	4	2	.083
4 x 2 1/2	6	10 1/2	4	2 1/2	.083
4 x 3	4	8 1/2	4	3	.083



A32M		Eccentric Reducer		
Size Tube O.D.	A	C	Nom. Wall	
2 x 1 1/2	2 1/2	1 1/2	.065	
2 1/2 x 1 1/2	4 1/2	1 1/2	.065	
2 1/2 x 2	2 1/2	2	.065	
3 x 2	4 1/2	2	.065	
3 x 2 1/2	2 1/2	2 1/2	.065	
4 x 2	8 5/8	2	.083	
4 x 2 1/2	6 5/8	2 1/2	.083	
4 x 3	4 5/8	3	.083	



A32ME		Eccentric Reducer (With Extension)		
Size Tube O.D.	A	C	Nom. Wall	
2 x 1 1/2	3 5/16	1 1/2	.065	
2 1/2 x 1 1/2	3 5/16	1 1/2	.065	
2 1/2 x 2	3 9/16	2	.065	
3 x 2	5 9/16	2	.065	
3 x 2 1/2	3 11/16	2 1/2	.065	
4 x 2	9 11/16	2	.083	
4 x 2 1/2	7 13/16	2 1/2	.083	
4 x 3	5 15/16	3	.083	

 Polished I.D. and O.D. only

sani-tech
west